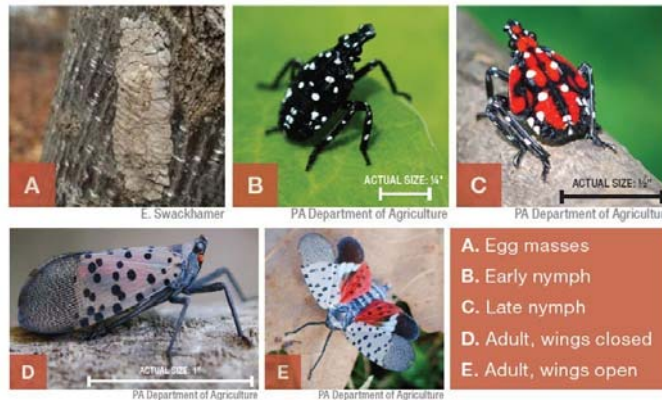


WANTED! THE SPOTTED LANTERNFLY (Preferably Dead, Not Alive!)

If you find a spotted lanternfly, **KILL IT & report it immediately by calling 1-888-4BAD-FLY**

Quick Facts

- The spotted lanternfly (SLF) is a **destructive, invasive pest insect** that is native to southeast Asia.
- **The SLF causes significant damage to over 70 plant species**, threatening important hardwoods, ornamental and shade trees, and agriculture, including food crops. If not contained, **the SLF could cost the PA economy at least \$324 million annually.**
- The SLF was recently found in Allegheny and Beaver counties. **A SLF quarantine is now in effect.** This is an important legal designation, and **it applies to vehicles and other conveyances, as well as to plants, wood, stone products, and outdoor household items.**
- **SLF lay eggs on almost any surface, including vehicles, and so are easily spread by people.**



What does the SLF look like?

- The SLF goes through five stages of growth. Stages 1-4 (in spring) are called nymphs and cannot fly. **Early nymphs are black with white spots. Late nymphs are red with patches of black, and white spots.**
- **Adults (in summer) are about 1" long.** Their wings are **grey with black spots above, and bright red underneath.**
- In fall, **adults lay eggs in masses on trees, under bark, posts, cars, and many other surfaces.** The SLF live through the winter as eggs, which hatch as nymphs in spring.

What can YOU do to help stop the spread?

- **LOOK BEFORE YOU LEAVE!**
 - **Inspect cars or other vehicles. REMOVE AND KILL any SLF eggs, nymphs or adults** before traveling in and out of the quarantine zone.
- **SCRAPE OFF AND DESTROY EGG MASSES** from any outdoor equipment (grills, mowers, firewood etc.)
- **Band trees, KILL NYMPHS AND ADULTS,** and remove tree-of-heaven (a favored, invasive host plant).
- For more information, see Penn State Extension: <https://extension.psu.edu/spotted-lanternfly>

PREPARED BY THE FRANKLIN PARK BOROUGH ENVIRONMENTAL ADVISORY COUNCIL